

Calgo Instructions

1. **DRILL 1 3/8" HOLE IN DASH**
2. **MOUNT STEERING POST WITH STUDS PROVIDED**
3. **PLACE STEERING UNIT IN POST AND POSITION CABLES AS SHOWN IN DRAWING, INSTALL AND TIGHTEN SET SCREWS PROVIDED**
4. **DRILL STRINGER AND MOUNT CLAMP PLATES (PROP BOATS), OR DRILL TRANSOM FOR ADJUSTING SCREWS (JET BOATS)**
5. **MEASURE CABLE HOUSING, AND CUT TO LENGTH. TRIM BURRS OFF OF ENDS.**
6. **INSERT CABLE INTO HOUSING AND GREASE LIBERALLY WITH STANDARD AUTOMOTIVE WHEEL BEARING GREASE.**
7. **INSERT ENDS OF HOUSING INTO FITTINGS ON DASH UNIT AND INTO ADJUSTING SCREWS AT STRINGER (ON PROP BOATS) OR TRANSOM (ON JET BOATS)**
8. **HOOK CABLE SECURELY TO TILLER OR QUADRANT AND PULL TENSION TIGHT BY HAND. (BE SURE TO CENTER TILLER OR QUADRANT BEFORE TIGHTENING)**
9. **REMOVE TIMING PLUG (1/4-28) ALLEN SCREW) FROM BACK OF STEERING UNIT AND INSTALL GREASE FITTING SUPPLIED. (UNIT IS FILLED WITH GREASE AT THE FACTORY AND WILL NOT NEED TO BE GREASED)**
10. **SPIN STEERING FROM TILLER OR QUADRANT SEVERAL TIMES BACK AND FORTH, AND THEN CHECK CABLE TENSION. THE CABLE SHOULD NOT BE LOOSE. IF THE CABLE IS LOOSE, ADJUST TENSION WITH THE ADJUSTING SCREWS (3/4-10 ALUMINUM SCREWS). IF THE TENSION IS TOO TIGHT THE UNIT WILL STEER HARD. THE STEERING MAY BE MADE TO TURN EASIER OR HARDER BY LOOSENING OR TIGHTENING THE CABLE TENSION**

CAUTION....SPECIAL NOTE....CAUTION....SPECIAL NOTE....CAUTION....SPECIAL NOTE

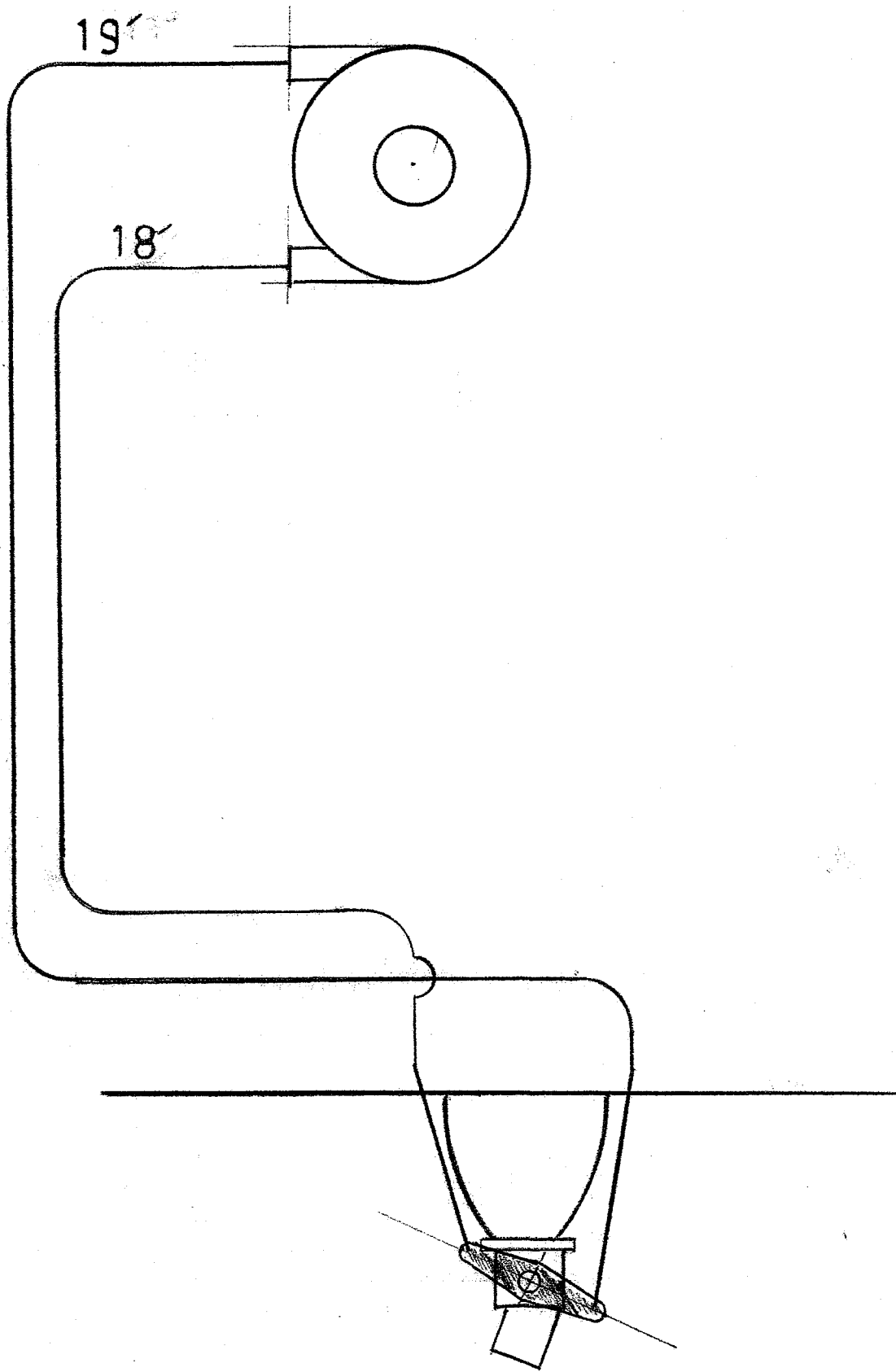
**DO NOT LET CABLES GET LOOSE ON QUADRANT!!!!!! THEY MAY FALL OFF!!!!!!
DO NOT OVER TENSION CABLES.**

DO NOT TURN STEERING WHEEL WHEN CABLES ARE NOT HOOKED UP!!!!!!!!!!!!!!!!!!!!!!!!!!!!

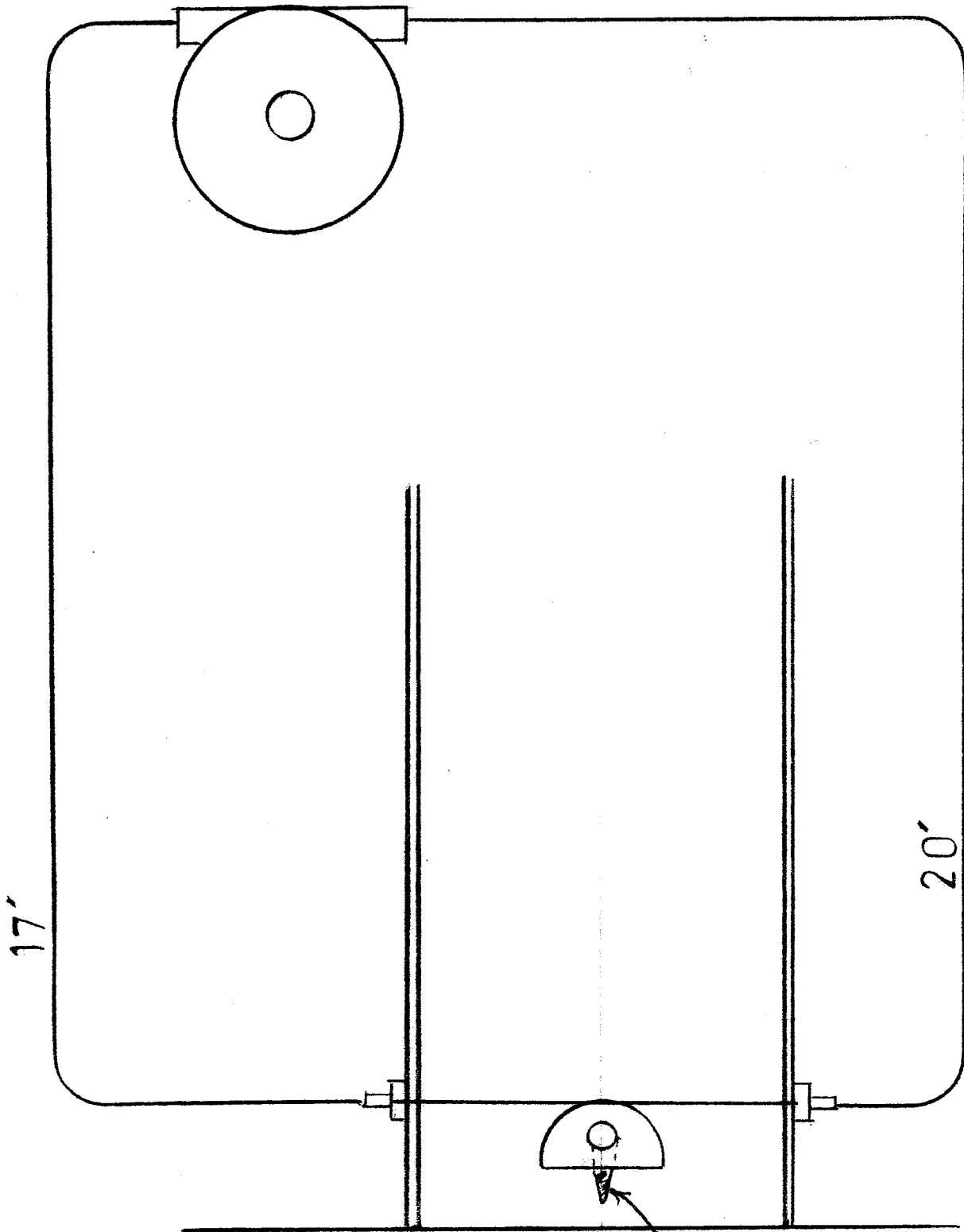
THE 1/4-28 TIMING PIN IS INSTALLED AT THE FACTORY TO PREVENT THE TURNING OF THE STEERING UNIT WHEN THE UNIT IS NOT HOOKED UP!!!!!!!!!!!!!!!!!!!!!!!!!!!!!!!!!!!!

TURNING THE STEERING UNIT WHEN IT IS NOT CONNECTED TO THE TILLER OR QUADRANT WILL JAM THE CABLE INSIDE THE STEERING UNIT AND WILL REQUIRE REPLACEMENT OF THE CABLE PRIOR TO USE

THIS UNIT IS TO BE INSTALLED BY A PROFESSIONAL, ALL SERVICE SHOULD BE PERFORMED BY THE FACTORY



G100A & G101A 1/8" JET



G109A & G111A 3/16 V DRIVE

TILLER
RUDDER